

For internal use only!

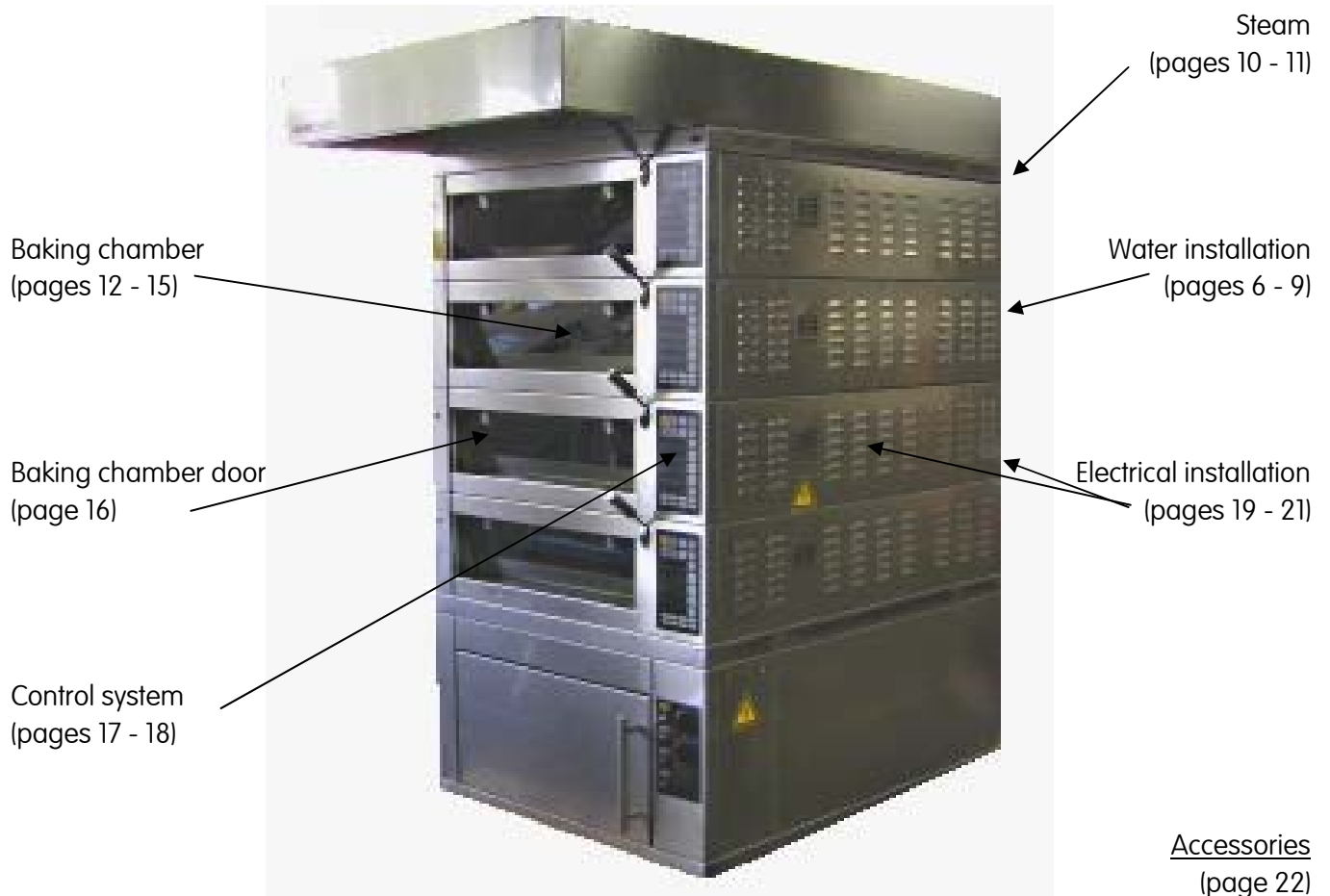
Multi-deck oven  
**MIWE** condo  
4.0608

Version: 0.1

No part of this documents must by reproduced or processed, copied, or distributed using electronic systems without the prior written consent of the publisher (MIWE Michael Wenz GmbH) in any form (print, foto copy, microfilm).

The same holds true for the simple forwarding of these instructions or the disclosure of the contents.

**MIWE Michael Wenz GmbH**  
**P.O.D. 20, D-97448 Arnstein, Germany**  
**Phone +49-(0)9363-666**  
**Fax +49-(0)9363-68 8422**  
**email [originalteilede@miwe.de](mailto:originalteilede@miwe.de)**  
**[www.miwe.com](http://www.miwe.com)**



## Water installation

Position number	Short descr. of the item	Item No.	Page
1	Befestigungswinkel Wasserfilt.	507532.04	6
2	Wasserfilter-3/8"Ax3/8"l-MS	507532.00	6
3	Filtertasse MS	507532.01	6
4	Filz-Siebeinsatz	507532.02	6
5	Red.Muffe*1542*MS a/i 3/8x1/2	508650.00	6
6	Nippel-red. RG l-Kon 3/4x1/2	507518.05	6
7	Schlauch-Anschluß 3/8"x 245	507439.00	7
8	T-Stück MS 3 x 3/8"α	507535.00	7
9	Magnetventilwinkel Buschjost	071482.20	7
10	Magnetventilstecker SVS 230 V	504974.01	7
11	Ventil.Magn.l- 3/8"-D-230/50 BJ	505212.45	7
12	SPRITZRO.ZULEIT.kpl lang re	071284.01	8
13	Hahnverl.*1513* Rotguss 3/8"x 25	508658.00	8
14	Nippel-red. MS 2xKon 3/8x1/4	507536.02	8
15	Wasserzähler "Flowmeter FH20" 1/4"	507570.02	8
16	Gerätesteckdose Wasserzähler	505212.08	9

## Steam

Position number	Short descr. of the item	Item No.	Page
17	Schelle-Gewinde 25- 40	507436.00	10
18	Winkel*3090* RG 90° i 3/4x1/2"	508507.01	10
19	Schlauch-Dampf (1/2") 13x4,1	507422.01	10
20	Schwadenapp. geschw. kpl. CO 0608 1.0	071448.60	10
21	Heizstab Schwad.app.kpl. 0.6br 750W	071489.04	11
22	Fühler Temp. D=5mm PT1000 L180	504006.08	11
23	Stellantrieb Grun 225S-230T-02-HAT	506605.34	11

## Baking chamber

Position number	Short descr. of the item	Item No.	Page
24	EGO STB 3pol. 1890mm Kapillar 355°C-20K	504024.30	12
25	Fühler Temp. D=5mm PT1000 L180	504006.24	12
26	Fühler-Schutzrohr 8-150	504023.01	12
27	Dichtung Backofenlampe "BJB"77.707	504544.17	12
28	Backofenlampe "BJB"77.707 Rahm	504544.18	12
29	Backofenlampe "BJB"77.707 Glas	504544.16	13
30	Halogenrefl.Lampe G5.3 12V 50W	504587.07	13
31	Fassung-Halogen GU 5,3	504588.04	13
32	Herdplatte FY co 625x815x13	506452.13	13
33	Heizstab C060 (95) 230V 320W	070616.00	14

## Baking chamber

Position number	Short descr. of the item	Item No.	Page
34	Heizstab C060 (95) 230V 415W	070615.00	14
35	Heizstab C060 (95) 230V 415W	070615.00	15
36	Heizstab C060 (95) 230V 320W	070616.00	15
37	Heizstabdichtung	070439.00	15

## Baking chamber door

Position number	Short descr. of the item	Item No.	Page
38	Glasscheibe 615x188x6	073714.20	16
39	Knopf flach mit Rändel	085273.20	16
40	Silikonlage D=25x8,5 Glastür	507171.00	16
41	Scheibe B 10.5 DIN 125-A2	501906.10	16
42	Handgriff Türhebel IG	073980.40	16
43	Drehhebel-Stange 8x69	073700.40	16

## Control system

Position number	Short descr. of the item	Item No.	Page
44	Bedientableau FP8kpl anthrazit	504077.71A	17
45	BDS-Leistungsteil	504078.02A	17
46	DS-Kühlkörperblock mit Triac	504078.50A	17
47	Flachbandkabel m.Stecker 300mm	504080.00	17
48	condo Verbindungskabel mit Stecker	074635.00	17
49	Federleiste 5,0 mm 3p 231-103	504451.04	18
50	Federleiste 5,0 mm 4p 231-104	504451.05	18

## Electrical installation

Position number	Short descr. of the item	Item No.	Page
51	Lautsprecher (Aufbau)	505224.01	19
52	Endklammer TS35 249-117	504399.00	19
53	4-L.D-Klemme 2.5 grau 280-833	504396.01	19
54	4-L.D-Klemme 2.5 blau 280-834	504397.01	19
55	4-L.PE-Klemme 2.5 gr/ge280-837	504400.01	19
56	Sich. Autom. Moeller 1p B10 (PXL)	504347.61	20
57	Kleinschutz LC1-K0610 P72	504202.07	20
58	Ringtrafo 230/208V-11.5/20V UL	505235.08	20
59	Stromkreisverteiler A636T	504481.01	20
60	Sich. Autom. Moeller 1p B16 (PXL)	504348.61	21
61	Sich. Autom. Moeller 1p B10 (PXL)	504347.61	21

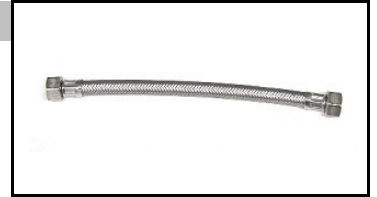
## Accessories

<b>Position number</b>	<b>Short descr. of the item</b>	<b>Item No.</b>	<b>Page</b>
62	Überspielkabel DS 3 pol 130cm	504073.29	22
63	Silikonkartusche Transparent	507353.00	22
64	Steckbuchsenabdeckung RS 232	504068.00	22
65	Kantenschutz schwarz 1010-02	505511.01	22
66	Dichtband isoTHERM ST-Band selbstklebend	505517.40	22
67	Silikonkartusche Hitze fest rot	507353.02	22





7



8



9



10



11





12



13



14



15







16





17



18



19



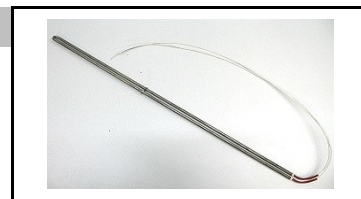
20



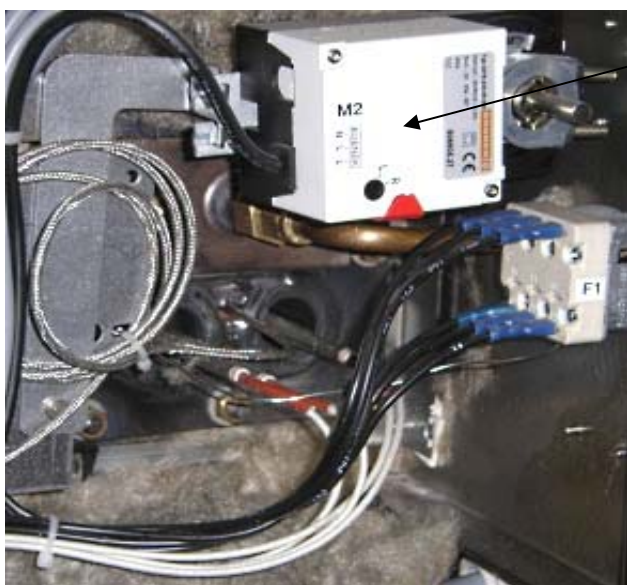
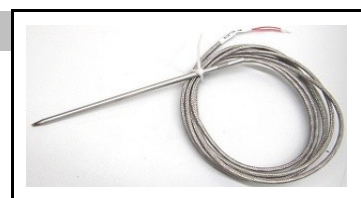
Steam device, complete



21



22



23

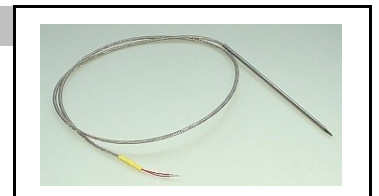




24



25



26



27



28





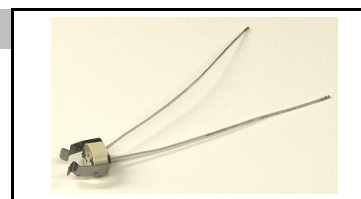
29



30

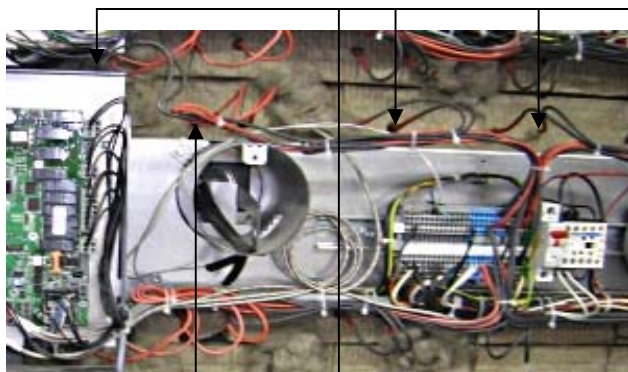


31

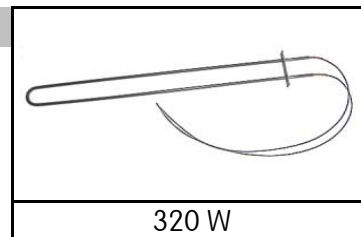


32

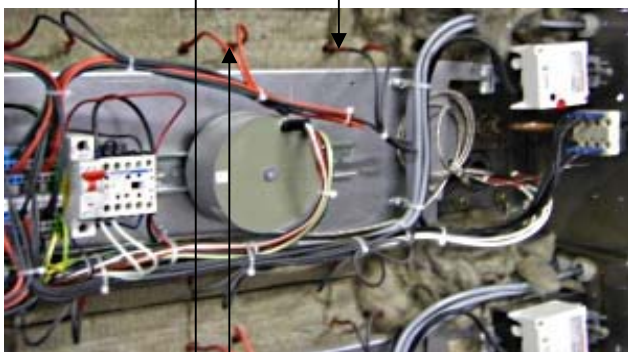




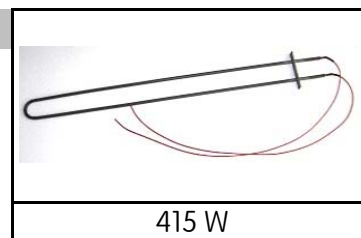
33



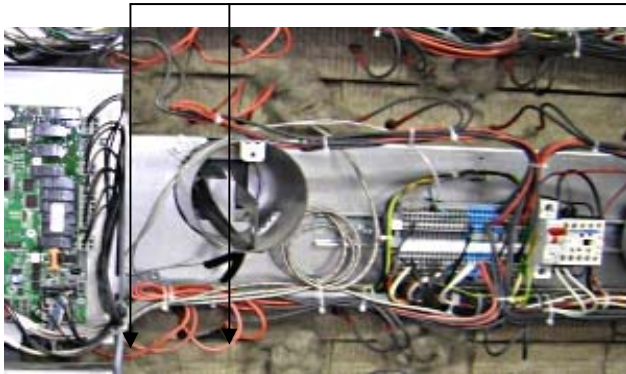
320 W



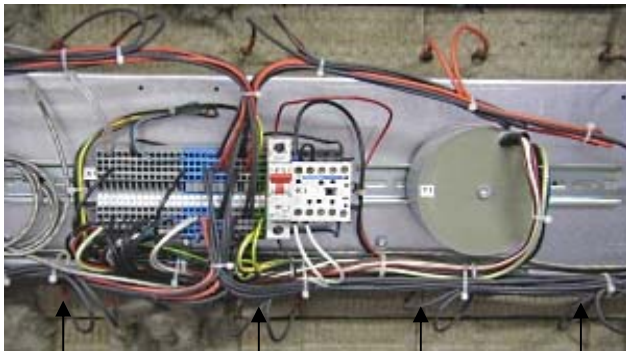
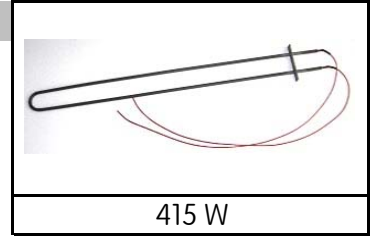
34



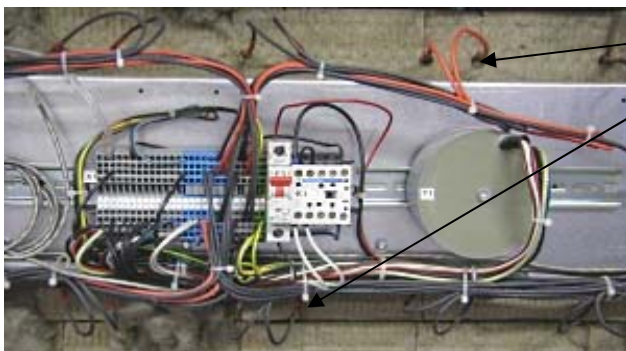
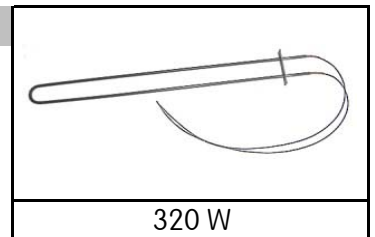
415 W



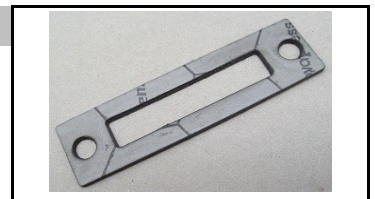
35

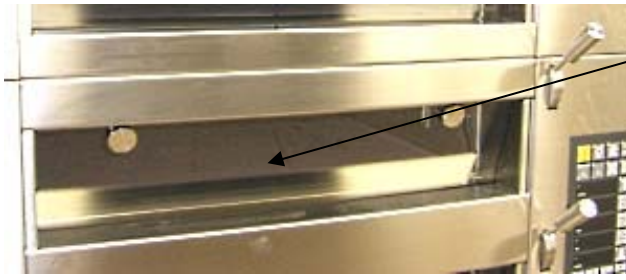


36



37





38



39



40



41



42



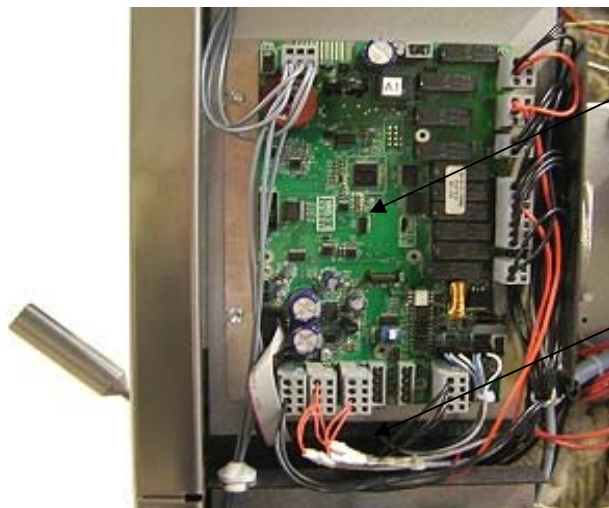
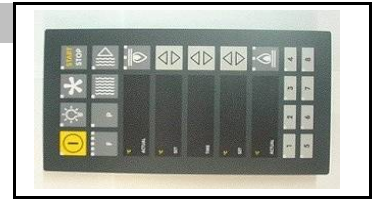
43



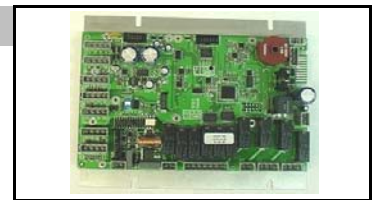




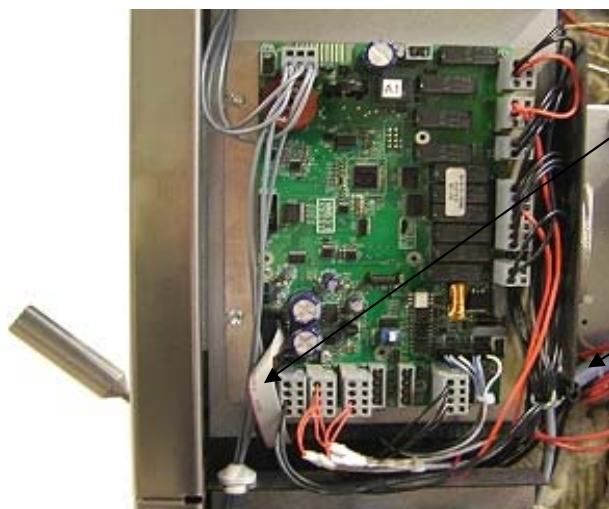
44



45



46

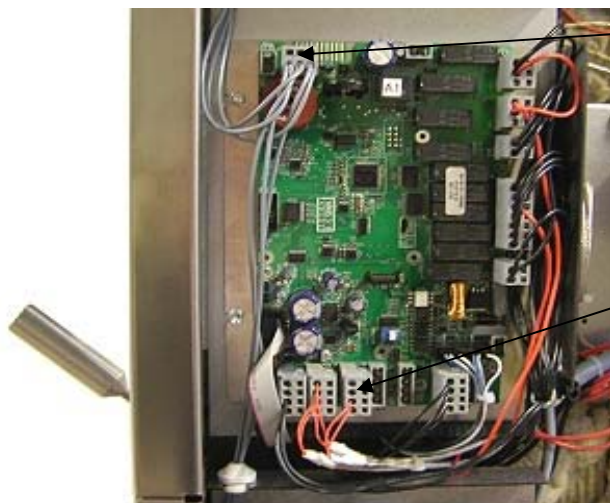


47



48

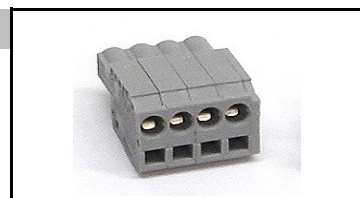


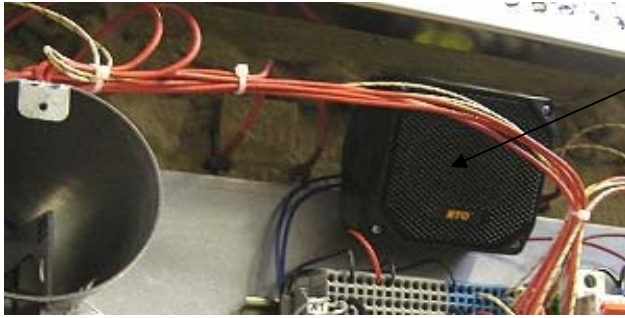


49

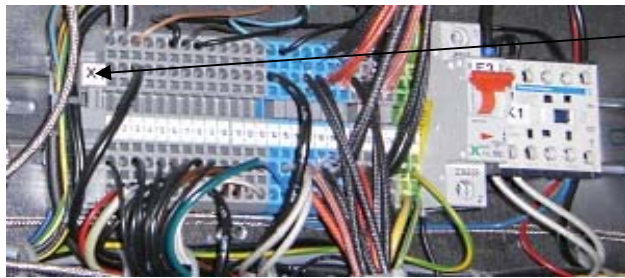


50

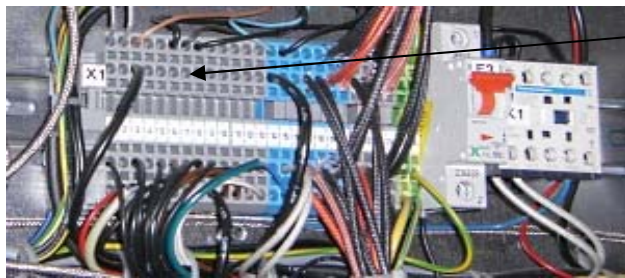




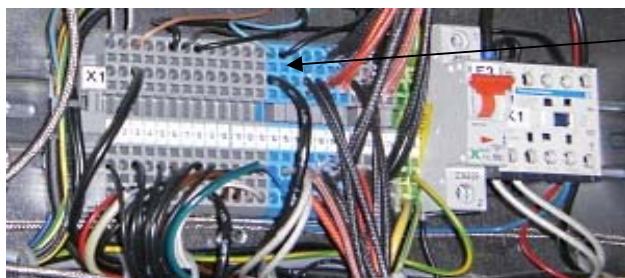
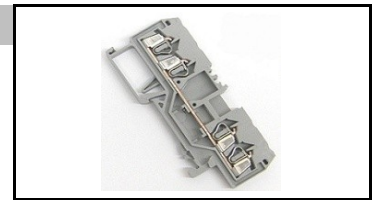
51



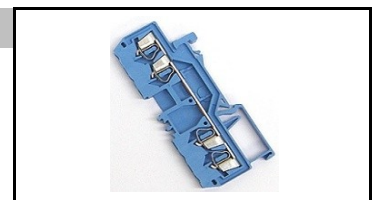
52



53

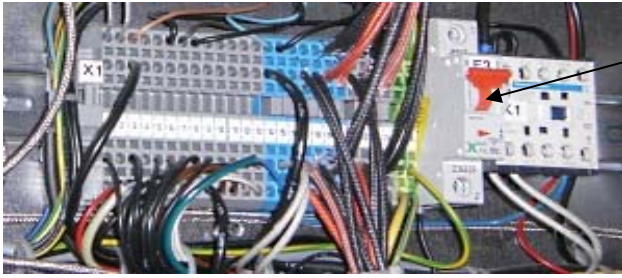


54

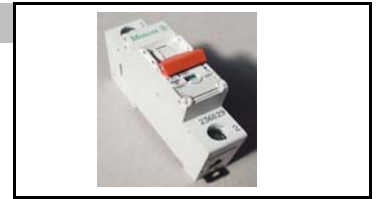


55

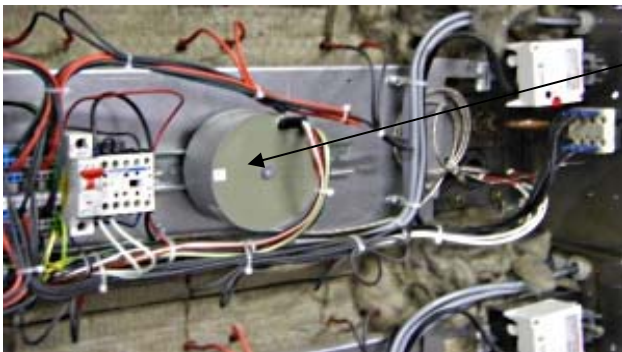




56



57



58

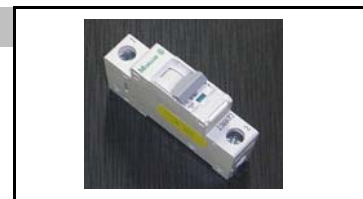


59





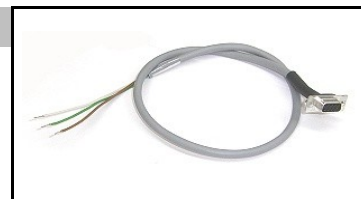
60



61



62



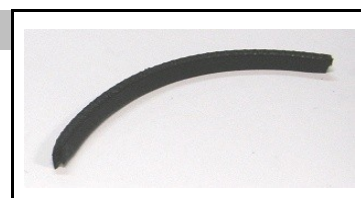
63



64



65



66



67

